

Fig. N-690 Swing Check Valve

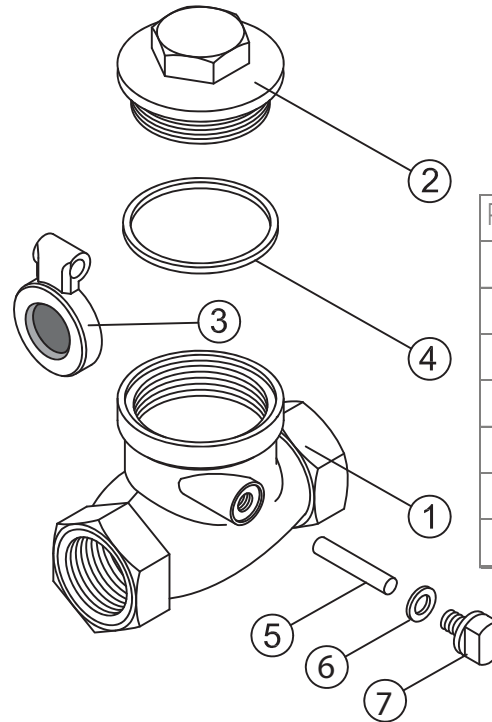
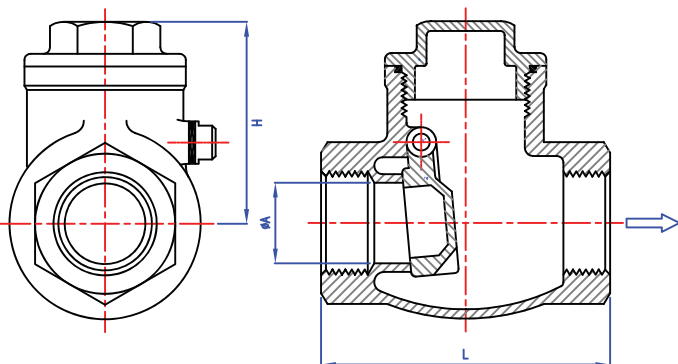


DN 15 - DN 50  
1/2" - 2"

### Technical Data

- Body Cast Material as Per EN 1503-1
- Body Wall Thickness as Per EN12515-1
- Face to Face as Per Manufacturer Standards
- Threaded Ends : BS21, ISO 228-1, Din 2999 and ISO 7-1Rp
- Temperature: -20°C - 180°C
- Working Pressure: 200 psig CWP
- Tested as Per EN 12266

### Sectional View



### Material List

Part N°	Part Name	Material
1	Body	A351 Gr. CF8M
2	Bonnet	A351 Gr. CF8M
3	Disc	A351 Gr. CF8M
4	Body Seal	PTFE
5	Hinge Pin	S.S 316
6	Plug Seal	PTFE
7	Plug	S.S 316

### Design Features

- Swing Type Valve with Solid Disc Can Be Installed in Any Position
- Design appropriate for Almost All Fluids
- High Quality Investment Cast Components
- Operating Pressure: 1.5 Bar
- Threaded End Connections

### Dimensions

Size		L		H		A	
DN	inch	mm	inch	mm	inch	mm	inch
8	1/4	65.0	2.56	42.0	1.65	11.0	0.43
10	3/8	65.0	2.56	42.0	1.65	15.0	0.59
15	1/2	65.0	2.56	42.0	1.65	15.0	0.59
20	3/4	80.0	3.15	51.0	2.00	20.0	0.79
25	1	90.0	3.54	60.0	2.36	25.0	0.98
32	1 1/4	105.0	4.13	67.0	2.64	32.0	1.26
40	1 1/2	120.0	4.72	75.0	2.95	40.0	1.58
50	2	140.0	5.51	81.0	3.19	50.0	1.97
65	2 1/2	180.0	7.09	93.0	3.66	65.0	2.56
80	3	200.0	7.87	104.0	4.09	80.0	3.15

Note: Size range available is from 1/2" - 2" only.